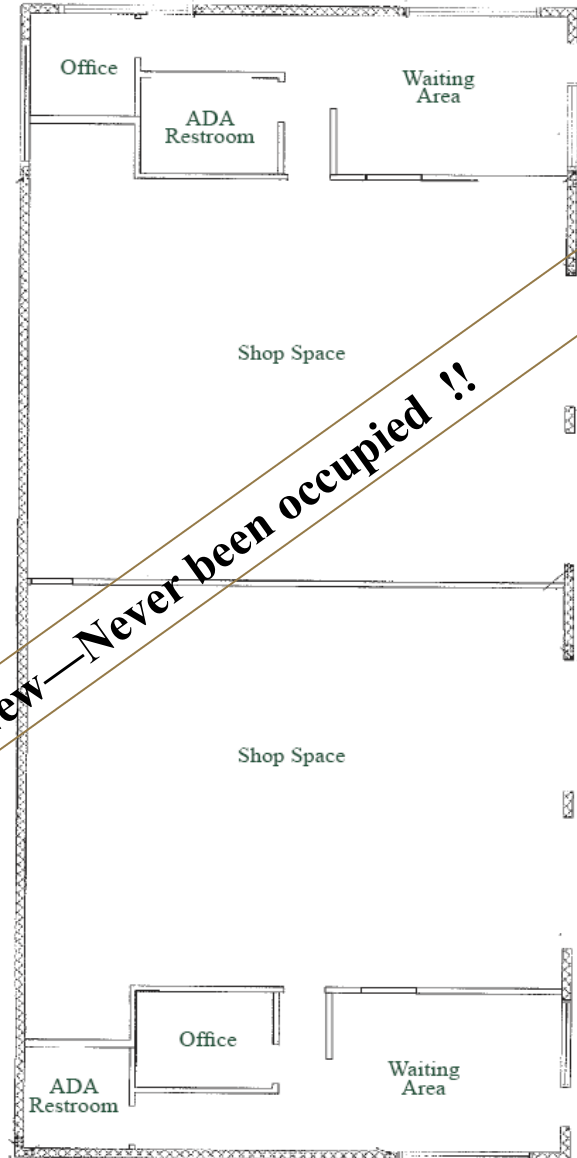


# FOR SALE +/-3,540 sf

5480 Pacific St., Rocklin, CA 95677

- **REDUCED TO \$525,000.00**
- **Bank Owned**
- **Well Suited for Auto Related**
- **+/- 3,540 SF Stand Alone**
- **Divisible to 2 - 1,770 units**
- **Zoned C-2**
- **High Traffic area**
- **Lube and Tire restricted (as main business)**
- **Speedee Oil, GoodYear Tire as co-tenants**



*PDF Commercial, Inc.*  
*9381 E. Stockton Blvd., Suite 200*  
*Elk Grove, CA 95624*  
*916-714-8012*

**Paul Frank**  
Lic# 01112160  
Paul@pdfcommercial.com

**Tammy Rayfield**  
Lic#01389499  
Tammy@pdfcommerical.com



PARCEL MAP

A PORTION OF THE NORTHEAST QUARTER OF THE SOUTHWEST QUARTER OF SECTION 19 T. 11 N., R. 7 E., NDM DENNIS WITHIN THE CITY OF ROCKLIN.

COUNTY OF PLACER, STATE OF CALIFORNIA  
DECEMBER 1992 SCALE: 1" = 40'  
AREA WEST ENGINEERS, INC.

SHEET 1 OF 1

- 1. THIS PARCEL MAP IS PREPARED BY A LICENSED PROFESSIONAL ENGINEER AND IS SUBJECT TO THE JURISDICTION OF THE BOARD OF PROFESSIONAL ENGINEERS OF THE STATE OF CALIFORNIA.
- 2. THIS PARCEL MAP IS PREPARED IN ACCORDANCE WITH THE REQUIREMENTS OF THE SUBDIVISION MAP ACT AND THE SUBDIVISION MAP ACT REGULATIONS.
- 3. THIS PARCEL MAP IS PREPARED IN ACCORDANCE WITH THE REQUIREMENTS OF THE SUBDIVISION MAP ACT AND THE SUBDIVISION MAP ACT REGULATIONS.
- 4. THIS PARCEL MAP IS PREPARED IN ACCORDANCE WITH THE REQUIREMENTS OF THE SUBDIVISION MAP ACT AND THE SUBDIVISION MAP ACT REGULATIONS.
- 5. THIS PARCEL MAP IS PREPARED IN ACCORDANCE WITH THE REQUIREMENTS OF THE SUBDIVISION MAP ACT AND THE SUBDIVISION MAP ACT REGULATIONS.

NOTICE TO CONTRACTORS:  
THE INFORMATION CONTAINED HEREIN IS FOR INFORMATIONAL PURPOSES ONLY AND DOES NOT CONSTITUTE A CONTRACT. THE CONTRACTOR SHALL BE RESPONSIBLE FOR OBTAINING ALL NECESSARY PERMITS AND APPROVALS FROM THE CITY OF ROCKLIN AND THE CALIFORNIA DEPARTMENT OF INDUSTRIAL RELATIONS AND THE CALIFORNIA DEPARTMENT OF INDUSTRIAL RELATIONS AND THE CALIFORNIA DEPARTMENT OF INDUSTRIAL RELATIONS.

APPROVED AND FORWARDED:  
*Michael J. Gorman*  
CITY ENGINEER  
CITY OF ROCKLIN

APPROVED AND FORWARDED:  
*Michael J. Gorman*  
CITY ENGINEER  
CITY OF ROCKLIN

APPROVED AND FORWARDED:  
*Michael J. Gorman*  
CITY ENGINEER  
CITY OF ROCKLIN

APPROVED AND FORWARDED:  
*Michael J. Gorman*  
CITY ENGINEER  
CITY OF ROCKLIN

APPROVED AND FORWARDED:  
*Michael J. Gorman*  
CITY ENGINEER  
CITY OF ROCKLIN

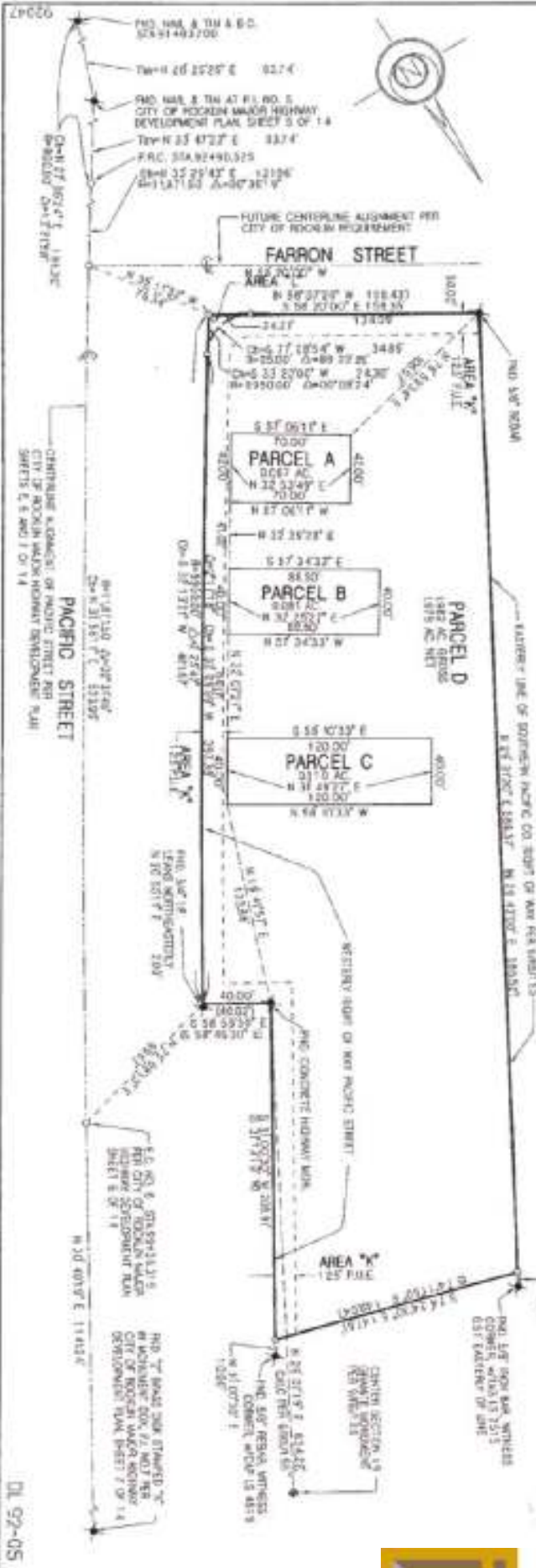
APPROVED AND FORWARDED:  
*Michael J. Gorman*  
CITY ENGINEER  
CITY OF ROCKLIN

APPROVED AND FORWARDED:  
*Michael J. Gorman*  
CITY ENGINEER  
CITY OF ROCKLIN

APPROVED AND FORWARDED:  
*Michael J. Gorman*  
CITY ENGINEER  
CITY OF ROCKLIN

APPROVED AND FORWARDED:  
*Michael J. Gorman*  
CITY ENGINEER  
CITY OF ROCKLIN

APPROVED AND FORWARDED:  
*Michael J. Gorman*  
CITY ENGINEER  
CITY OF ROCKLIN



DL 92-05

